

SRHC 2022

BIRMINGHAM - MARCH 30 - APRIL 2

A STRENGTH TO LOVE,
LEARN, AND EXPLORE:
HONORS AND COMMUNITY



CONTENTS

Welcome	3
SRHC Executive Committee and Board	4
Conference at a Glance	5
Conference Information	6
Facilities Maps	8
Conference Schedule	12

WELCOME

Dear Honors Students, Colleagues, and Guests,

On behalf of the Southern Regional Honors Council executive committee and board members, welcome you to the 50th Annual Conference and city of Birmingham!

We are pleased that you have chosen to spend the next several days with us. I am hopeful you will meet new friends and enjoy celebrating the work of students, faculty, and staff from across the southern region.

Our goal in planning this year's conference was to offer attendees a schedule of quality academic and informative presentations while still embracing the fun spirit that has characterized the Southern regional conferences for the past 50 years.

We hope you make the most of the conference and your stay in Birmingham!

Sincerely,

Aaron S. Hanlin
2022 Conference Chair
Vice President

A Note About our Conference Theme

A Strength to Love, Explore, and Learn: Honors and Community

With the city of Birmingham as our backdrop, this year's conference theme draws inspiration from Dr. Martin Luther King Jr.'s Strength to Love. A classic collection of Dr. King's sermons, Strength to Love was the first volume of sermons by an African American preacher widely available to a white audience and continues to promote King's vision of love as a force for change both politically and socially.

This year's theme invites participants to consider how we can all exercise the strength to love learning, explore new ideas, and learn from one another in order to achieve what Dr. King considered "genuine intergroup and interpersonal living" (King, 23) in our honors programs, on our campuses, and in our larger communities.

As a significant site and catalyst of the Civil Rights Movement, Birmingham provides us all with the opportunity to reflect on the legacy and impact of a movement that changed the nation. While we have made great strides toward building a more just society, we hope that this SRHC conference will also allow you to recognize the ongoing struggles for civil rights and challenge you to consider how honors education can help to achieve diversity, equity, and inclusion among all members of our communities.

EXECUTIVE COMMITTEE AND BOARD

Executive Committee

Kathy Cooke
President
University of South Alabama

Aaron Hanlin
Vice-President
Seminole State College of Florida

Rusty Rushton
Past President
University of Alabama-Birmingham

Kirsten Bartles
Past-Past President
Northwestern State University

Hayley King
Student Vice President
Morehead State University

Jon Blandford
Secretary
Bellarmine University

David Coleman
Treasurer

Board Members

Heather Waldroup
Faculty/Staff At-Large Representative
Appalachian State University

Steve Elliot-Gower
Faculty/Staff At-Large Representative
Georgia College and State University

Karen Keaton-Jackson
Faculty/Staff At-Large Representative
North Carolina Central University

Patrick Jacobs
Student At-Large Representative
Northwestern State University

Molly Rovinski
Student At-Large Representative
Bellarmine University

Appointed Assistants

Greg Tomso
Web Manager
University of West Florida

Tom Jones
Parliamentarian

CONFERENCE AT A GLANCE

Thursday, March 31

9:00 a.m. - 9:30 a.m.	City as Text Opening
9:30 a.m. - 12:00 p.m.	City as Text
12:00 p.m. - 1:00 p.m.	SRHC Executive Committee Meeting
1:00 p.m. - 5:00 p.m.	General Sessions
5:30 p.m. - 7:00 p.m.	President's Reception
6:30 p.m. - 8:30 p.m.	Birmingham Civil Rights Institute

Friday, April 1

7:30 a.m. - 8:30 a.m.	Breakfast
7:00 a.m. - 5:00 p.m.	Graduate School Fair
8:30 a.m. - 10:00 a.m.	Poster Session I
9:00 a.m. - 12:00 p.m.	General Sessions
12:00 p.m. - 2:00 p.m.	Lunch & General Business Meeting
2:00 p.m. - 5:00 p.m.	General Sessions
5:00 p.m. - 6:00 p.m.	Keynote Speaker: Ashley Jones
6:00 p.m. - 7:00 p.m.	Art Spiegelman
8:00 p.m. - 9:00 p.m.	Student Social Justice Discussion

Saturday, April 2

7:00 a.m. - 8:30 a.m.	Breakfast
8:30 a.m. - 10:00 a.m.	Poster Session II
9:00 a.m. - 11:50 a.m.	General Sessions
12:00 p.m. - 1:00 p.m.	SRHC Executive Committee Meeting

CONFERENCE INFORMATION

Oral Presentations, Research Panels, Posters, and More!

This year's conference features more than 260 oral presentations, over 140 posters, and several panels, all offering innovative insights on everything from gender theory to molecular biology. We have grouped oral presentations into sessions with similar themes so that participants coming to support one presenter will find themselves enlightened by other talks in the session. However, we encourage you to branch out and attend talks on topics outside of your own discipline. Growth takes daring and discomfort, and we hope you will challenge yourself to grow in the next few days.

Conference Etiquette

It is courteous and expected that those viewing individual talks remain in the session rooms for the entire time period to keep from disrupting other rooms/presenters, as presentations times vary from room to room. If you must leave, only do so between talks and with minimal disruption.

Wi-Fi

Marriott Rewards members may receive complimentary in-room Wi-Fi. All others must pay to have Wi-Fi access in rooms and throughout the hotel. Talk to a hotel representative for assistance. Wi-Fi is not available in breakout rooms.

Conference Badges

Please wear your badge to all conference activities and for admittance to meals. If you or someone in your party is missing a nametag, please see a representative at the registration table.

Information for Presenters

Please adhere to the timetable posted in the conference program. Moderators will assist with time keeping in all sessions. Presenters should have their presentation ready on a flash drive and arrive to their scheduled room early to load their presentation onto the computer. Any time lost in loading and accessing presentations will be taken from the presenter's speaking time. Please note there is no Wi-Fi in the presentation rooms.

SRHC General Business Meeting and Elections

The SRHC General Business Meeting will take place on Friday from 12:00 p.m. - 1:00 p.m. Elections of students, faculty, and staff to the Executive Council of the SRHC will occur at the business meeting. Moreover, the financial report, information about future conferences, other business, and the "Roll Call of the States" will take place. The meeting is open and attendance is strongly encouraged for all conference participants. Lunch is provided.

CONFERENCE INFORMATION

Conference Schedule

This conference program is an abbreviated guide to the official conference schedule, which is hosted in the Grenadine Event Guide. Please note that all session abstracts are available on the website. Grenadine Event Guide is available for free as a mobile app to participants, and we encourage you to schedule your sessions in advance. Please note that the most accurate schedule is available on the Event Guide. The sessions are also available on the Grenadine Event website.

To download Grenadine Event Guide, visit the App or Play Store. Use code "srhc2022" to access our conference.

Parking

Parking is available on site for a daily rate of \$20.00. Conference participants receive a 20% discount on self-parking.

BJCC

EVENT PARKING MAP

RED GARAGE
917 22ND ST. N.

BOUTWELL GARAGE BPA #2
801 19TH ST. N.

GREEN LOT
2478 11TH AVE. N.

PURPLE LOT
930 19TH ST. N.

SILVER GARAGE
1080 22ND ST. N.

PARKING GARAGE B PREMIUM PARKING CO. P3804
2119 6TH AVE. N.

PARKING GARAGE D BPA #4
2128 4TH AVE. N.

PARKING LOT F REGIONS
559 22ND ST. N.

RIDESHARE PICKUP/DROPOFF

ORANGE LOT
1000 19TH ST. N.

GOLD LOT
2130 11TH AVE. N.

BLUE GARAGE PATRIOT CENTER
2000 11TH AVE. N.

PINK LOT
973 23RD ST. N.

PARKING GARAGE A JEFFERSON COUNTY
784 RICHARD ARRINGTON, JR. BLVD. N.

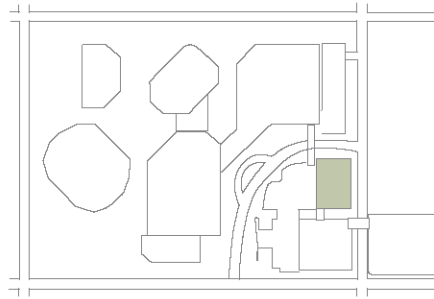
PARKING GARAGE C BPA #3
401 20TH ST. N.

PARKING GARAGE E BPA #5
2012 5TH AVE. N.

PARKING LOT G
2323 7TH AVE. N.

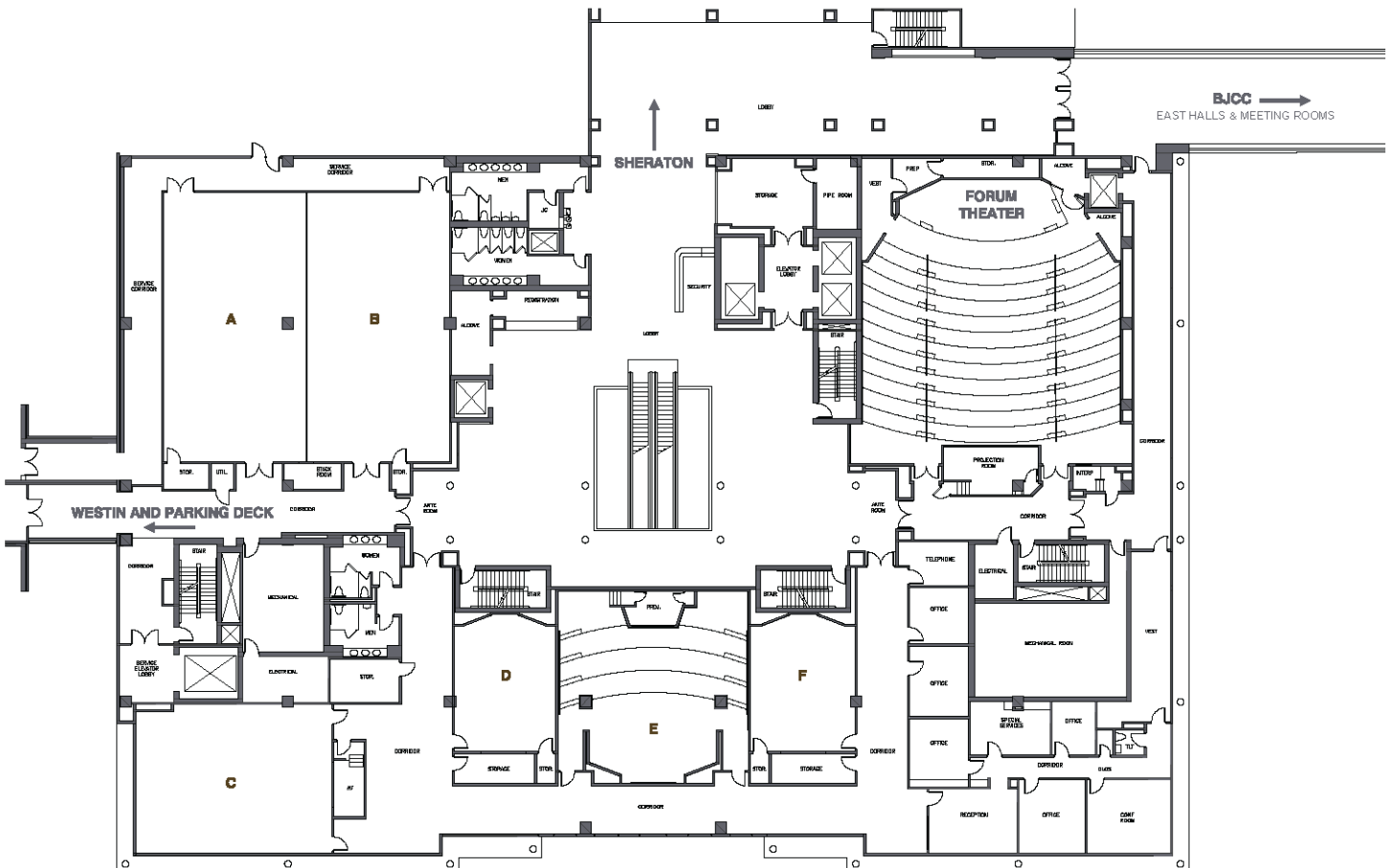
Map Labels: F. L. Shuttlesworth Dr., 12th Ave. N., 23rd St. N., 25th St. N., 26th St. N., 11th Ave. N., 10th Ave. N., 9th Ave. N., 6th Ave. N., Rev. Abraham Woods Jr. Blvd., Richard Arrington Jr. Blvd., The Westin Birmingham, Forum Building, The Sheraton Birmingham, North Meeting Rooms, North Exhibition Hall, South Exhibition Hall & Meeting Rooms, Theatre, Concert Hall, East Exhibition Hall, East Meeting Rooms & Ballroom, ASHOF, Legacy Arena, Protective Stadium, Top Golf, UAB, I-65, I-59, I-20, I-75, I-205, I-206, I-207, I-208, I-209, I-210, I-211, I-212, I-213, I-214, I-215, I-216, I-217, I-218, I-219, I-220, I-221, I-222, I-223, I-224, I-225, I-226, I-227, I-228, I-229, I-230, I-231, I-232, I-233, I-234, I-235, I-236, I-237, I-238, I-239, I-240, I-241, I-242, I-243, I-244, I-245, I-246, I-247, I-248, I-249, I-250, I-251, I-252, I-253, I-254, I-255, I-256, I-257, I-258, I-259, I-260, I-261, I-262, I-263, I-264, I-265, I-266, I-267, I-268, I-269, I-270, I-271, I-272, I-273, I-274, I-275, I-276, I-277, I-278, I-279, I-280, I-281, I-282, I-283, I-284, I-285, I-286, I-287, I-288, I-289, I-290, I-291, I-292, I-293, I-294, I-295, I-296, I-297, I-298, I-299, I-300, I-301, I-302, I-303, I-304, I-305, I-306, I-307, I-308, I-309, I-310, I-311, I-312, I-313, I-314, I-315, I-316, I-317, I-318, I-319, I-320, I-321, I-322, I-323, I-324, I-325, I-326, I-327, I-328, I-329, I-330, I-331, I-332, I-333, I-334, I-335, I-336, I-337, I-338, I-339, I-340, I-341, I-342, I-343, I-344, I-345, I-346, I-347, I-348, I-349, I-350, I-351, I-352, I-353, I-354, I-355, I-356, I-357, I-358, I-359, I-360, I-361, I-362, I-363, I-364, I-365, I-366, I-367, I-368, I-369, I-370, I-371, I-372, I-373, I-374, I-375, I-376, I-377, I-378, I-379, I-380, I-381, I-382, I-383, I-384, I-385, I-386, I-387, I-388, I-389, I-390, I-391, I-392, I-393, I-394, I-395, I-396, I-397, I-398, I-399, I-400, I-401, I-402, I-403, I-404, I-405, I-406, I-407, I-408, I-409, I-410, I-411, I-412, I-413, I-414, I-415, I-416, I-417, I-418, I-419, I-420, I-421, I-422, I-423, I-424, I-425, I-426, I-427, I-428, I-429, I-430, I-431, I-432, I-433, I-434, I-435, I-436, I-437, I-438, I-439, I-440, I-441, I-442, I-443, I-444, I-445, I-446, I-447, I-448, I-449, I-450, I-451, I-452, I-453, I-454, I-455, I-456, I-457, I-458, I-459, I-460, I-461, I-462, I-463, I-464, I-465, I-466, I-467, I-468, I-469, I-470, I-471, I-472, I-473, I-474, I-475, I-476, I-477, I-478, I-479, I-480, I-481, I-482, I-483, I-484, I-485, I-486, I-487, I-488, I-489, I-490, I-491, I-492, I-493, I-494, I-495, I-496, I-497, I-498, I-499, I-500, I-501, I-502, I-503, I-504, I-505, I-506, I-507, I-508, I-509, I-510, I-511, I-512, I-513, I-514, I-515, I-516, I-517, I-518, I-519, I-520, I-521, I-522, I-523, I-524, I-525, I-526, I-527, I-528, I-529, I-530, I-531, I-532, I-533, I-534, I-535, I-536, I-537, I-538, I-539, I-540, I-541, I-542, I-543, I-544, I-545, I-546, I-547, I-548, I-549, I-550, I-551, I-552, I-553, I-554, I-555, I-556, I-557, I-558, I-559, I-560, I-561, I-562, I-563, I-564, I-565, I-566, I-567, I-568, I-569, I-570, I-571, I-572, I-573, I-574, I-575, I-576, I-577, I-578, I-579, I-580, I-581, I-582, I-583, I-584, I-585, I-586, I-587, I-588, I-589, I-590, I-591, I-592, I-593, I-594, I-595, I-596, I-597, I-598, I-599, I-600, I-601, I-602, I-603, I-604, I-605, I-606, I-607, I-608, I-609, I-610, I-611, I-612, I-613, I-614, I-615, I-616, I-617, I-618, I-619, I-620, I-621, I-622, I-623, I-624, I-625, I-626, I-627, I-628, I-629, I-630, I-631, I-632, I-633, I-634, I-635, I-636, I-637, I-638, I-639, I-640, I-641, I-642, I-643, I-644, I-645, I-646, I-647, I-648, I-649, I-650, I-651, I-652, I-653, I-654, I-655, I-656, I-657, I-658, I-659, I-660, I-661, I-662, I-663, I-664, I-665, I-666, I-667, I-668, I-669, I-670, I-671, I-672, I-673, I-674, I-675, I-676, I-677, I-678, I-679, I-680, I-681, I-682, I-683, I-684, I-685, I-686, I-687, I-688, I-689, I-690, I-691, I-692, I-693, I-694, I-695, I-696, I-697, I-698, I-699, I-700, I-701, I-702, I-703, I-704, I-705, I-706, I-707, I-708, I-709, I-710, I-711, I-712, I-713, I-714, I-715, I-716, I-717, I-718, I-719, I-720, I-721, I-722, I-723, I-724, I-725, I-726, I-727, I-728, I-729, I-730, I-731, I-732, I-733, I-734, I-735, I-736, I-737, I-738, I-739, I-740, I-741, I-742, I-743, I-744, I-745, I-746, I-747, I-748, I-749, I-750, I-751, I-752, I-753, I-754, I-755, I-756, I-757, I-758, I-759, I-760, I-761, I-762, I-763, I-764, I-765, I-766, I-767, I-768, I-769, I-770, I-771, I-772, I-773, I-774, I-775, I-776, I-777, I-778, I-779, I-780, I-781, I-782, I-783, I-784, I-785, I-786, I-787, I-788, I-789, I-790, I-791, I-792, I-793, I-794, I-795, I-796, I-797, I-798, I-799, I-800, I-801, I-802, I-803, I-804, I-805, I-806, I-807, I-808, I-809, I-810, I-811, I-812, I-813, I-814, I-815, I-816, I-817, I-818, I-819, I-820, I-821, I-822, I-823, I-824, I-825, I-826, I-827, I-828, I-829, I-830, I-831, I-832, I-833, I-834, I-835, I-836, I-837, I-838, I-839, I-840, I-841, I-842, I-843, I-844, I-845, I-846, I-847, I-848, I-849, I-850, I-851, I-852, I-853, I-854, I-855, I-856, I-857, I-858, I-859, I-860, I-861, I-862, I-863, I-864, I-865, I-866, I-867, I-868, I-869, I-870, I-871, I-872, I-873, I-874, I-875, I-876, I-877, I-878, I-879, I-880, I-881, I-882, I-883, I-884, I-885, I-886, I-887, I-888, I-889, I-890, I-891, I-892, I-893, I-894, I-895, I-896, I-897, I-898, I-899, I-900, I-901, I-902, I-903, I-904, I-905, I-906, I-907, I-908, I-909, I-910, I-911, I-912, I-913, I-914, I-915, I-916, I-917, I-918, I-919, I-920, I-921, I-922, I-923, I-924, I-925, I-926, I-927, I-928, I-929, I-930, I-931, I-932, I-933, I-934, I-935, I-936, I-937, I-938, I-939, I-940, I-941, I-942, I-943, I-944, I-945, I-946, I-947, I-948, I-949, I-950, I-951, I-952, I-953, I-954, I-955, I-956, I-957, I-958, I-959, I-960, I-961, I-962, I-963, I-964, I-965, I-966, I-967, I-968, I-969, I-970, I-971, I-972, I-973, I-974, I-975, I-976, I-977, I-978, I-979, I-980, I-981, I-982, I-983, I-984, I-985, I-986, I-987, I-988, I-989, I-990, I-991, I-992, I-993, I-994, I-995, I-996, I-997, I-998, I-999, I-1000.

FORUM BUILDING

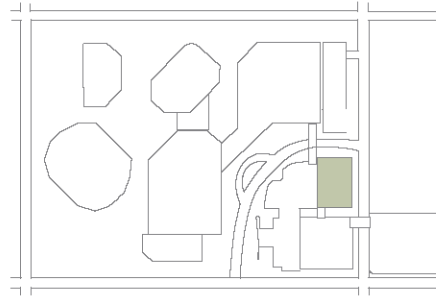


FORUM SECOND FLOOR

Room	Approx Sq Ft	Ceiling Height	Conference	Theatre	Classroom	U-Shape	Banquet
Theater	3,750		-	275	275	-	-
A	1,862	12'	54	192	66	47	112
B	1,900	12'	54	224	81	47	120
C	1,400	12'4"	40	168	54	38	96
D	639	10'	20	70	24	20	40
E	1,720	12"	-	-	51	-	-
F	632	10"	20	70	24	20	40

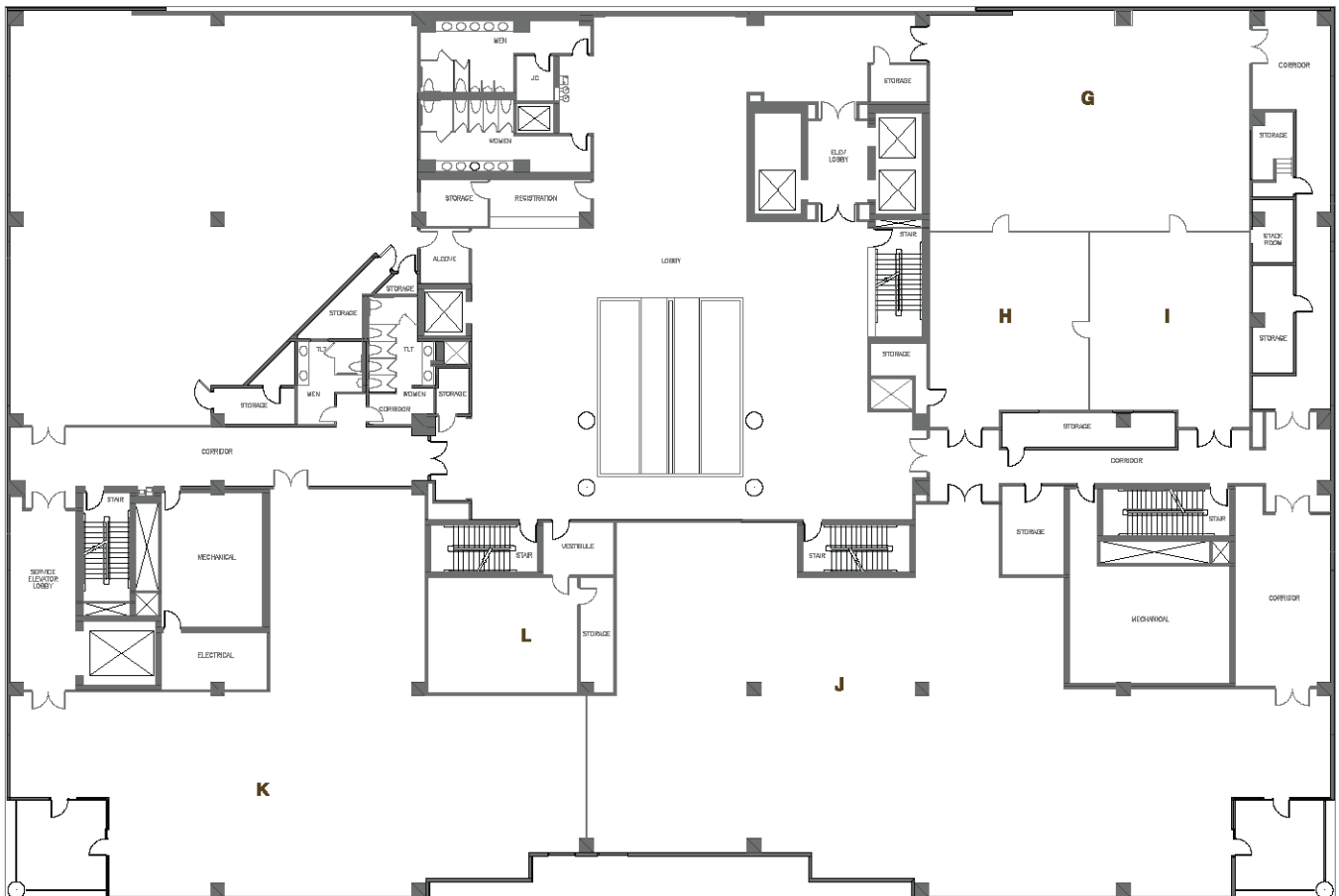


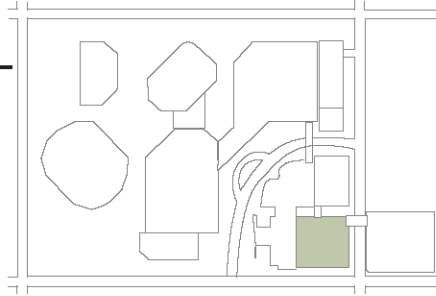
FORUM BUILDING



FORUM (3RD FLOOR)

Room	Approx Sq Ft	Ceiling Height	Conference	Theatre	Classroom	U-Shape	Banquet
G	2,270	11'3"	64	210	96	52	160
H	958	11'3"	36	65	36	26	72
I	965	11'3"	36	65	36	26	72
G-I	4,192	11'3"	-	450	168	-	240
H-I	1,923	11'3"	56	200	72	48	144
J	6,300	12"	-	-	-	-	320
K	4,300	12"	-	200	96	-	168
JK	10,600	12"	-	-	-	-	480
L	548	10'1"	24	36	18	-	32

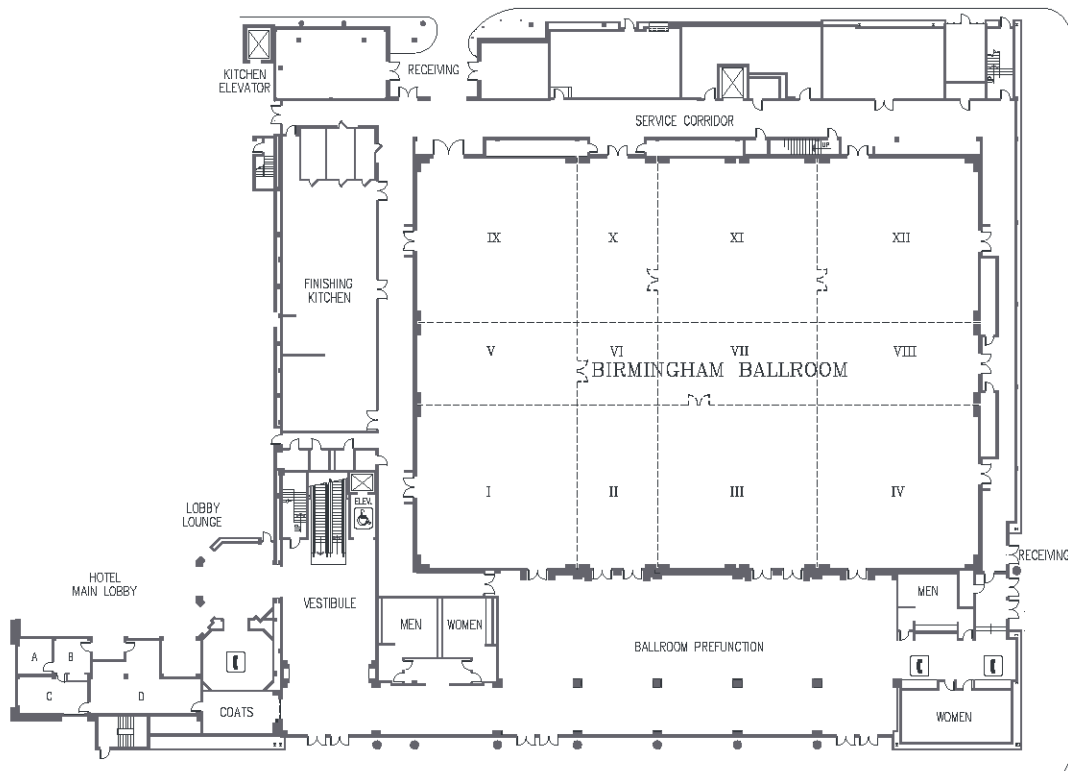




SHERATON BIRMINGHAM BALLROOM

THE SHERATON BALLROOM						
Room	Total Area	Dimensions	Theatre	Classrooms	Banquet	Reception
Birmingham Ballroom	25,000	185' x 135'	2,500	1,500	1,700	2,900
Ballroom I	2,862	53' x 54'	300	160	200	335
Ballroom II Foyer	1,422	25'4" x 54'	-	-	-	170
Ballroom III	2,844	52'8" x 55'	300	160	200	335
Ballroom IV	2,862	53' x 54'	300	160	200	335
Ballroom V	1,431	53' x 27'	-	-	-	170
Ballroom VI Foyer	711	26'4" x 27'	-	-	-	80
Ballroom VII Foyer	1,422	52'8" x 27'	-	-	-	170
Ballroom VIII Foyer	1,431	53' x 27'	-	-	-	170
Ballroom IX	2,862	53' x 54'	300	160	200	335
Ballroom X Foyer	1,422	26'4" x 54'	-	-	N/A	170
Ballroom XI	2,844	52'8" x 54'	300	160	200	335
Ballroom XII	2,862	53' x 54'	300	160	200	335
Ballroom Prefunction	9,000	132' x 53' +	-	-	-	1,058
Ceiling Height: 20"						

Seating capacities may vary due to slight lines, head table, staging and audio-visual requirements.



ACKNOWLEDGMENTS

This year's conference would not have been possible without the assistance of a number of people, many of whom have worked tirelessly on this conference, in advance of the event and during the conference itself, to ensure that all goes well. As this year's Conference Chair, I would like to take a moment to acknowledge the help that I've received during the past several months.

First, I would like to thank the conference organizers from the past few years and especially the SRHC executive committee for their support, guidance, and encouragement. Specifically, I would like to thank Kathy Cooke, David Coleman, Jonathan Blandford, and Mike Sloane. Thank you for helping address unexpected situations, for answering my questions, texts, and phone calls as they arose, and for making sure we could host this event once again in a live format.

Also, a BIG thank you goes to Jenny Makselan and Greg Tomso from the University of West Florida for handling all of the accounting and finances for the conference.

Additionally, Mike Sloane and the University of Alabama at Birmingham Honors College have very generously provided poster stands and backing boards for this conference. Lanyards, note pads, and tote bags were provided by UAB as well as remnants from the postponed 2020 conference. Please thank them when you see them!

I would also like to thank the National Collegiate Honors Council for their continued sponsorship and recognition of the Southern Regional Honors Council.

This event also wouldn't be possible without the staff at the Sheraton Birmingham Hotel.

I am also grateful to the support from the students, faculty, and staff from Seminole State College of Florida who graciously agreed to support me in taking on the responsibility of conference chair. Special thanks to Taylor Moore, Neil Vaz, Tracy Harbin, Diana Reigelsperger, and all of our student volunteers.

Finally, this conference would not exist without the support and participation of the member institutions and their students, faculty, and staff, as well as everyone's commitment to the importance of Honors education.

Please, enjoy your time here at the conference and in Birmingham.

Sincerely,

Aaron S. Hanlin
Seminole State College of Florida/Florida State College at Jacksonville

Thursday, March 31

7:00 a.m. - 5:00 p.m.

Registration and Information Desk
Sheraton Ballroom Prefunction

9:00 a.m. - 9:30 a.m.

City as Text Overview
Birmingham Ballrooms 3, 4, 7, 8, 11, 12

9:30 a.m. - 12:30 p.m.

City as Text
Explore Birmingham Civil Rights District

12:00 p.m. - 1:00 p.m.

SRHC Executive Committee Meeting
Jefferson Boardroom 1

12:30 p.m. - 1:00 p.m.

Student Moderator Training

1:00 p.m. - 5:00 p.m.

General Sessions
Forums A, B, C, D, F, G

5:30 p.m. - 7:00 p.m.

President's Reception
Birmingham Ballrooms 3, 4, 7, 8, 11, 12

6:30 p.m. - 8:30 p.m.

Birmingham Civil Rights Institute



CITY AS TEXT

Birmingham Civil Rights District

The national monument encompasses historic sites downtown that were significant to the revolution that took place in the streets of Birmingham in the 1960s. One of those sites is the city's most famous civil rights landmark, the 16th Street Baptist Church.

Included in the national monument district is Birmingham's Bethel Baptist Church, credited with shaping the Civil Rights Movement here. Civil rights legend, the Reverend Fred L. Shuttlesworth, was pastor of Bethel Baptist from 1953 through 1961. The church often served as a gathering place for discussions of civil rights among blacks, gatherings that angered white supremacists. In 1958, Bethel Baptist was bombed, though the church was empty at the time. The bombing cemented Shuttlesworth's fiery determination to bring Birmingham to the center of the Civil Rights Movement.

The national monument includes Kelly Ingram Park. The park served as a congregating area for demonstrations in the early 1960s, including the ones in which police dogs and fire hoses were turned on marchers by Birmingham police. Images of those attacks haunted Birmingham in the decades that followed, but they were the same images that were instrumental in overturning legal segregation.

Source: <https://www.birminghamal.org/listings/birmingham-civil-rights-district/>

GENERAL SESSION 1:00 - 1:50 PM

Panel Sessions on Civil Rights and Community

Forum A

Panel Presentation

Strength to Love Our Neighbors: Homelessness, Service-Learning, and Christian Ethics

Coleman Fannin, Madison Clevenger, Olivia Gilmore, Amanda Merrilles, Kristy Moss
Berry College

Forum B

Panel Presentation

CCPxHSV: Conversations Exploring History and Society

Grace Dodge, Kiran Soma
North Carolina State University

Forum C

Panel Presentation

“Learning in Place”: Exploring Relationships between Ways of Learning

Heather Fox, Hannah McQueary, Jordan Nelson, Natalia Smith
Eastern Kentucky University

Forum D

Panel Presentation

Rethinking Honors: Martin Luther King Jr.'s Impact on Honors Education, College Campuses, and the Community

Avani Shaw, Calley Anderson, Briana Thomas, Kira Rhodeback
Kennesaw State University

Forum F

Panel Presentation

Your Voice Matters: Making Local Civic Engagement Accessible and Impactful

Jordan Windham, Susanna Allred, Taleah Sadler, Isaac Westfall
Auburn University

Forum G

Panel Presentation

How Miles College Students Helped Change Birmingham's Civil Rights Reputation

Jessica Harris, Olivia Cook
Miles College

GENERAL SESSION 2:00 - 2:50 PM

Forum A

Panel Presentation

Should Race be a Variable in Research?

Navaneeth Shibu, Shrey Pradeep, Janessa Madison, Rohit Reddy
University of Alabama Birmingham

Forum B

Oral Presentations
Global Experiences

Experiences of a Virtual Public Health Intern in Kenya

Ashley George
University of Tennessee at Chattanooga

Honors Education Beyond the Classroom: How an Editorial Assistantship Augments Diversity Learning and Global Learning

Brent Robbins, A. Minh Ngyuen
Florida Gulf Coast University

Forum C

Oral Presentations
STEM Education

A Place for STEM in Honors Education

Marlee Marsh, Valeria Bogdanova, Ariana Pratt
Columbia College

Training the Future Generation of STEM

Anushka Patel, Arlene Bulger, Kevin Jarrett, Shirley Ginwright, Katie Busch Chandran, Dr. J. Michael Wyss
University of Alabama at Birmingham

The Push for STEM Education and Its Effects on Students

Maria Arnold
Catawba College

Forum D

Oral Presentations
Healthcare Discussions

The Current Issue of Abortion

Sarah Grooms
Catawba College

Addressing Pregnancy in the Black Community: Preparation Beyond Preventative Strategies

Sydney Collins
Virginia Wesleyan University

Crucial Conversations in Honors Education and in Healthcare

Abby Horton
The University of Alabama

GENERAL SESSION 2:00 - 2:50 PM

Forum F

Oral Presentations
Racial Economics

The American Dream: Black Homeownership in Birmingham, Alabama

Mary Katherine Stewart
Birmingham-Southern College

The Color of a Dollar

Jamila Tate
North Carolina Central University Honors Program

An Investigation into the Relationship Between Louisiana Community Banks' Lending Practices and Profitability

Michael Taylor Hollman
University of Louisiana Monroe

Forum G

Oral Presentations
Race in Literature

Racial Implications in William Shakespeare's "Othello"

AC Coy
University of North Carolina Greensboro

"Enter Into a Providential Reciprocity": Thomas Merton's Call to Action for Racial Equality in the 21st Century

Anne Pearson
Bellarmine University

Suburban Blight in Wanda Coleman's "Requiem for a Nest"

Katherine Vason
Georgia Southern University

GENERAL SESSION 3:00 - 3:50 PM

Forum A

Oral Presentations
Language & Literature

Can You Type Your Name? Realizing the Continued Effects of Colonization on Language

April Trepagnier
Georgia Southern University

The Literary Intent of Code-Switching within the Works of Louise Erdrich

Bruno Santic
Bellarmine University

The Myth of a Monochrome Canon: Problems with the Current State of British Literature Education and How to Reform It

Jude Keef
University of Tennessee at Chattanooga

Forum B

Oral Presentations
Diversity in Society

Making A Case for The Tired and Exhausted Working Class

Tashana Hawkins
Miles College

Making A Case for Increasing Diversity in Accounting Profession

Jerris Baker
Miles College

Where Are the Black Coming-of-Age Films? An Analysis of the Lack of Diversity in Hollywood

Kafui Sakyi-Addo
University of Alabama at Birmingham

Forum C

Oral Presentations
Modern Warfare

The Fascist Appeal: Nazism, the Soldier, and the American Patriot

Dante Rovere
The Citadel

The War Crimes of America

Roland Chau
Seminole State College of Florida

Controlling America: Analysis on Prohibition and the War on Drugs

Samuel Mallay
Seminole State College of Florida

GENERAL SESSION 3:00 - 3:50 PM

Forum D

Oral Presentations
Justice Reform

A Rehabilitative Approach to Correctional Institutions Using Evidence-Based Practices

Rachel Lane
University of Tampa

Post Incarceration: Society's Role in Reintegrating Young Offenders Who Are Now Adults

Christopher Wooldridge
Florida SouthWestern State College

Recognition for Restoration: Examining Civil Rights Cold Cases in Partnership with Jefferson County Memorial Project and the Northeastern Civil Rights and Restorative Justice Project

Lauren Barnett
Birmingham-Southern College

Forum F

Oral Presentations
Modern Education

Teaching modern political philosophy through pop culture

Rebekah Vaughn
Gardner-Webb University

Medical Illustration - A Way to Explore, Learn, and Form Community during the COVID-19 Pandemic

Kaitlyn Chase, Valerie Weiss
Florida Gulf Coast University

Learning to Love Books (Again)

Amy Pirkle
The University of Alabama

Forum G

Panel Presentation

Honors Community & Professional Development with HIFI & HIFLO

John Zubizarreta, Craig Kaplowitz, Ashleen Williams, Mike Savoie
Columbia College

GENERAL SESSION 4:00 - 4:50 PM

Forum A

Oral Presentations

Challenges in Education

Developing Museum Field Trips in a Digital Age

Summer Fulbright, Sarah Troxell

University of North Carolina Greensboro

Managing Big Changes in Honors at a Small College

Lizeth Francia, Jzurnee Meyers

Columbia College

Refusing Boundaries: Historicizing the Ethics of Transdisciplinarity

Megan Snider Bailey

The University of Alabama

Forum B

Hosted Conversation

The Marvel Multiverse: Has Disney Gone Too Far?

Doroth St. Pierre, Joshua Freeman

Southeastern Louisiana University

Forum C

Oral Presentations

Literary Readings

Tangled Webs

Lauren Graves

University of Tennessee at Chattanooga

Translating Poems by Contemporary Latin American Poets

Holly Hendrix

Morehead State University

Apulli Wine and Orange Flowers

Caroline Fettes

Georgia College & State University

GENERAL SESSION 4:00 - 4:50 PM

Forum D

Oral Presentations
Political Impacts

The Impact of Political Beliefs on Ethical Positions in Adults

Kiana Oliver
Southern Adventist University

Trans Panic as a Legal Defense

Kathryn Fox
University of North Florida

Women in Political Media

Amanda Velez
Georgia Southern University

Forum F

Oral Presentations
Social Issues in Creative Ventures

The Influence of Steve Ditko on the Development of Spider-Man and How That Relates to the Modern Interpretations of the Character

Connor Lee
Catawba College

Shakedown Street: The Grateful Dead and the Commodification of Hippie Culture

Zachary Graham
Georgia Southern University

A Purple Bridge: The Path of a Screenwriter

India Standley
West Georgia University

Forum G

Panel Presentation

Implications of Preimplantation Genetic Diagnosis (PGD)

Ethan George, Ibshar Marnia, Elena Chesnokova, Ava Henson
University of Alabama at Birmingham



PRESIDENT'S RECEPTION

5:30 - 7:00 p.m.

Birmingham Ballrooms 3, 4, 7, 8, 11, 12

Join us for a networking reception while enjoying appetizers and hors d'oeuvres



Featuring Live Music by The Official Clutch Band

Clutch, a prodigious group of youngsters from Birmingham, Alabama is beginning to take the music world by storm. Clutch is the culmination of six musicians with contrasting styles that blend together, leaving the best taste in the mouth of the listener. Formed in a basement on December 27, 2011, the band was fueled by their mutual interest and love of music. Clutch brings to you the smooth sounds of several genres: Jazz, Motown, Gospel, Classic R&B, R&B, Pop, and more. These youngsters' sound will have you standing on your feet and rocking in your seat.....this is CLUTCH.



Birmingham Civil Rights Institute

6:30 - 8:30 p.m.

***College ID Required for
Student Admission***

ABOUT BCRI

The Birmingham Civil Rights Institute, part of the Birmingham Civil Rights National Monument and an affiliate of the Smithsonian Institution, is a cultural and educational research center that promotes a comprehensive understanding for the significance of civil rights developments in Birmingham.

Celebrating its 30th anniversary in 2022, BCRI reaches more than 150,000 individuals each year through award-winning programs and services.

Friday, April 1

7:00 a.m. - 5:00 p.m.

Registration and Information Desk
Sheraton Ballroom Prefunction

7:00 a.m. - 5:00 p.m.

Graduate School Fair
Sheraton Ballroom Prefunction

7:30 a.m. - 8:30 a.m.

Breakfast
Birmingham Ballrooms 3, 4, 7, 8, 11, 12

8:30 a.m. - 10:00 a.m.

Poster Session I
Birmingham Ballrooms 1, 5, 9

9:00 a.m. - 11:50 a.m.

General Sessions
Forums A, B, C, D, F, G

12:00 p.m. - 2:00 p.m.

Lunch
Birmingham Ballrooms 3, 4, 7, 8, 11, 12

2:00 p.m. - 5:00 p.m.

General Sessions
Forums A, B, C, D, F, G

5:00 p.m. - 6:00 p.m.

Keynote: Ashley M. Jones
Birmingham Ballrooms 3, 4, 7, 8, 11, 12

8:00 p.m. - 9:00 p.m.

Student Social Justice Discussion
Birmingham Ballrooms 3, 4, 7, 8, 11, 12

Graduate School Fair

Lobby

Thank you to our Graduate School Fair Sponsors

Meet with campus representatives to learn about admissions, scholarships, and academic programs available for graduate study.



AUBURN UNIVERSITY
GRADUATE SCHOOL

TROY
UNIVERSITY™

UNIVERSITY of 
West Georgia®

Poster Session I

8:30 a.m. - 10:00 a.m.

Synthesis Of Propargyl Amine Derivatives for Co2 Fixation

Mercy Agbo
Southeastern Louisiana University

Development of The Transgenic Transparent Zebrafish Strain to Study CNS Microglia Function

Karen Aikhionbare
Augusta University

Confirmation of eIF3g1

James Aawn
Appalachian State University

The Effects of Arsenic Exposure and Alcohol Abuse on the Upregulation of CYP2E1

Jhana Boston
North Carolina Central University

Analysis of Mechanisms by which PINK1 Mutations cause Parkinson's disease

Reshu Chandra
University of Alabama at Birmingham

Empirical Treatments Help Calcium Channels for Hemiplegic Migraines

Victoria DeBarbieris
Southeastern Louisiana University

Gadolinium's Effect on Organisms

Harley Garlick
Southeastern Louisiana University

Enabling Underserved Communities to Monitor Influent Water Quality

Josiah Hacker
Georgia Southern University

Characterization of Bisphenol-A (BPA) Sensitive Mutations Using the C. Elegans Model System

Claire Harper
Bellarmine University

Polycystic Ovarian Syndrome Genetic Origins

Lauren Henry
Bellarmine University

Assessing Trauma-Informed Care in Physical Therapy

Aubry Ikner
University of South Alabama

Poster Session I

8:30 a.m. - 10:00 a.m.

A Look Into the Life of Gottfried Wilhelm Leibniz

Wyatt Ingram
Jacksonville State University

Health Literacy of d/Deaf and Hard of Hearing Patients in the South

Kaleb Kittrell
University of South Alabama

Blue-Light Emissions and Sleep

Anastasia Koester
Bellarmine University

Development of Electrospun Scaffold for Sustained Delivery of Kartogenin

Robert Lawson
Mississippi State University

Structural Health Monitoring of Bioprinted Materials

Kathryn McIntosh
Georgia Southern University

What is Quantum Computing and Where is it Going?

Elliott Miller
University of West Florida

Changing Electron Donating Groups to Shift Maximum Absorption of Caged Compounds

Kathryn Monheim
University of North Georgia

Exploring Environmental Advocacy Through an Interactive Design Campaign

Samantha Mumma
University of West Florida

Novel Technique for the Isolation of Bacteriophage from Environmental Samples

Jared Oenick
University of North Georgia

Nursing Students' Knowledge and Attitudes Towards Pressure Injury Prevention

Anjolaoluwa Osiyoku
University of South Alabama

Development of NF- κ B:GFP/Casper Transparent Transgenic Zebrafish Model to Study an In-Vivo Inflammatory Process

Logan Ouellette
Augusta University

Poster Session I

8:30 a.m. - 10:00 a.m.

Constructing C++ Simulations for the Nab Experiment at ORNL

Jackson Ricketts Dr. Josh Hamblen
University of Tennessee at Chattanooga

Determination of Heavy Metals in Water through Anodic Stripping Voltammetry

Katherine Rogers
Eastern Kentucky University

Surface Reconstruction via the Curvature Interpolation Method

Shirli Salihaj
Mississippi University for Women

Cellular Toxicity and CFTR mRNA Upregulation by a Chloride Ion Channel Activating Compound

Sara Lynn Sligh
Mississippi University for Women

Advancement in Graphene Technology

Victoria Snook
The Citadel

Water Consumption Behaviors Impact on Dental Health

Grace Staples
Bellarmine University

Jet Fuel Production by Fischer-Tropsch Synthesis of Biochar Derived Syngas using Hybrid Catalysts

Jack Steinagel
Georgia Southern University

Medical Geography: How Geography and Culture Affect Cancer Risk and Death Rate

Elle Techasiriwan
Chattanooga State Community College

Determining if the M1 and M2 Muscarinic acetylcholine receptors (mAChRs) underlie the Phosphorylation of Extracellular Signal- Regulated Kinase in Adult Zebrafish Telencephalon

Makenzi Thomas
Georgia Southern University

Plant species identity, but not elevation, shape the co-existence of fungi colonizing plant roots along a New Zealand mountainside

Nathan Valentine
University of South Alabama

Poster Session I

8:30 a.m. - 10:00 a.m.

Quality vs. Quantity of Neurons

Alex Varghese Amy Lee, William Kennedy, P.A. Harshad, Mary Seelig, Dr. J.I. Wadiche, Dr. L. Overstreet-Wadiche
University of Alabama at Birmingham

The Role of Histone Deacetylase 9 in Aging and Obesity

Praneet Veerapaneni
Augusta University

Deception in Healthcare

Johnelle Weekley
Lander University

Antimicrobial Effects of a Lemon-Based Marinade and Additives

Benjamin Wheeler
Mississippi State University

GENERAL SESSION 9:00 - 9:50 AM

Forum A

Hosted Conversation

When Tennessee Bans It, We Read It: MAUS as a Common Read for the UWF Kugelmann Honors Program

Julie Riser, Gabriel Bloom
University of West Florida

Forum B

Panel Presentation

Inclusive Makerspace Environment

Khristine Arnold, Mika Nelson
University of Tennessee at Chattanooga

Forum C

Panel Presentation

Heritage and Health: An Honors College Commitment to Celebrate Community

Heather Burton, Sarah Johnson, Emma Padgett
Limestone University

Forum D

Oral Presentations
Science 1

Synthesis and Biological Evaluation of 1,3-Diarylpyrazoles: in vitro Cytotoxicity Studies on Melanoma Cancer Cells

Uchechi Damaris Owunna

A Diffusion Tensor Imaging approach to investigate the effects of exercise on quadriceps muscle fiber lengths

Reese Dunne
Mississippi State University

Endogenous CFTR Expression in Human Epithelial Cell Lines

Zithlaly Amezcua
Mississippi University for Women

GENERAL SESSION 9:00 - 9:50 AM

Forum F

Oral Presentations
Spirituality in Art &
Literature

What would He say? Reaching Jesus through technology

Alison Cody
Appalachian State University

Sacred Art: A Tool for Empathy, Using Mary, the Mother of Jesus, as a Model

Felina Thomas
Augusta University

Love as Energy: Is it possible to imagine a world without love? An examination of the energy and essence of love

Emma Nantz
Catawba College

Forum G

Oral Presentations
Arts & Literature

"Harlem" and an Explosion of the Arts

Sarah Singleton
University of Tennessee at Chattanooga

Flooded with Swimsuits: Sexual Transcendence in Colm Toibin's Brooklyn

Brooke Neal
Georgia Southern University

Constructing Multidimensional Utopias: Spaces of Reform in Margaret Atwood's Hag-Seed (2016)

Faith Langford
Mississippi University for Women

GENERAL SESSION 10:00 - 10:50 AM

Forum A

Hosted Conversation

Maintaining Honors Program Cohesion Through Pandemic

Lexi Miller, Olivia Danner, Jamie Martinez, Edith Reese
University of West Florida

Forum B

Panel Presentation

Loving Ourselves: The Strength in Cultivating Community Service and Intellectual Enrichment in Two HBCU Honors Programs

Karen Keaton Jackson
North Carolina Central University

Forum C

Oral Presentations
Exploring Social Issues

The Effects of Political Corruption in Contemporary Louisiana

Blaine Warren
University of Louisiana at Monroe

Perceptions of Gendered Racial Microaggressions

Ayanna Brown
Georgia Southern University

One Night Without a Home

Alisa Lirette
University of Louisiana at Monroe

Forum D

Oral Presentations
Activism in Creative Writing

Rewriting Gender Inequity and Bias on the American Stage

Donna Owens
Catawba College

Writing a Better Future: Playwriting as a Tool for Identity and Activism

Kea Kamiya
Florida Gulf Coast University

Pleasing the Male Audience: Erasing Female Agency in Works Inspired by Richardson's "Pamela"

Megan Darling
University of Tampa

GENERAL SESSION 11:00 - 11:50 AM

Forum F

Oral Presentations
Global Culture

The Spanish in the Carolinas: The Whole Picture

Hayley King
Morehead State University

A Mixing Bowl of Holidays: How Globalization Impacts Holidays and Culture, Seen Through Halloween and El Día de los Muertos

Aneesah Dalal
Georgia Southern University

What Is Love: A Cultural Analysis of American Love Marriages and Indian Arranged Marriages

Sneha Anthony
University of Alabama at Birmingham

Forum G

Oral Presentations
Sustainable Communities

Community Based Organizations as a Tool for Sustainable Community Development: the Case in Kapchorwa

Annie Manges
Appalachian State University

Honors Collaboration in Promoting Sustainability: How interdisciplinary approaches were applied in expanding sustainable action in Pensacola, FL

Emerson Cheney, Tucker McDonald
University of West Florida

Managing Sustainable Entities

Santiago Fernandez
West Georgia University

GENERAL SESSION 11:00 - 11:50 AM

Forum A

Hosted Conversation

Learning to Collaborate: Freshmen Student Experiences of an Honors College Common Book Group Project

Megan Snider Bailey
University of Alabama

Forum B

Panel Presentation

Multicultural Guerillas: Diversifying the Curriculum through Honors

Juan Antonio Alonso
Chattanooga State Community College

Forum C

Oral Presentations
*Social Justice and
Human Rights*

Restricted at Home, Impeded Abroad: A Study of Domestic Human Rights Practices and Women's Global Economic Power

Cameron Cheatham
Georgia Southern University

Reexamining Social Injustice

Mckenzie Mowoe, Konner Price
Miles College

Deciphering Locks, and Abating walls: A First-Generation Mayan Student Chronicle of Her Journey to a Southeastern Honors Program

Ingrid Vicente
Chattanooga State Community College

Forum D

Oral Presentations
Modern Technology

How can we Protect Patient Data Without Sacrificing AI Performance?

Caitlin Cifaldi
University of Tampa

A Policy Approach To Trust in Autonomous Cars

Rachael George, A.M. Svancara, Dr. B. McManus, H.Beck, M.G. Albright, Dr. D. Stavrinos
University of Alabama at Birmingham

Evaluating Secondary Market Price Determinants for the PlayStation 5

Maxwell Harley
Georgia College & State University

GENERAL SESSION 11:00 - 11:50 AM

Forum F

Oral Presentations
Science 2

Computational Comparison of Dual Bell, Expansion-Deflection, and Aerospike Nozzles

Manuel Abadie
Georgia Southern University

Grain Boundary Energy on Thermal Conductivity of Thorium Dioxide

Brendan Carroll
Georgia Southern University

Determining Groove Separation and Wavelength from a Rotating CD

Alexandria Carter
The Citadel

Forum G

Oral Presentations
Healthcare Hesitancy

University students' perceptions of parental discipline techniques: Personal acceptability of the use of corporal punishment

Addison Montroy
Georgia Southern University

Vaccine Hesitancy in the Black Community of Downtown Orlando

Nathan Graham
Valencia College

Structural Violence and healthcare access among undocumented immigrants: A case study in Central Florida

Juan Vivas Devia
Valencia College

GENERAL SESSION 2:00 - 2:50 PM

Forum A

Hosted Conversation

Papers in the Plague Years: The Thesis Experience During COVID-19

Oleander Reagan-Artemis, Zachary Cross, Jude Keef, Meredith Rippy, Jan-nat Saeed

University of Tennessee at Chattanooga

Forum B

Oral Presentations
*Honors Community
Building*

Reimagining Honors Community Through People of Honors

Gabrielle Evans

University of Tennessee at Chattanooga

Empowering Honors Students as Leaders, Learners, and Changemakers in Lloyd International Honors College

Portia Harris, Eric Toler

University of North Carolina Greensboro

The Importance of HBCUs in Modern Day Society and Their Influence on Our Culture

Alejandro Ibrahim

North Carolina Central University

Forum C

Panel Presentation

Built to Connect: A Multifaceted Approach to Creating Community in Honors

Nathan Hedman, Stacy Lipowski, Max Kresock, Courtney Collar

High Point University

GENERAL SESSION 2:00 - 2:50 PM

Forum D

Oral Presentations
Medical Research

Development of Research Tools to Study the Role of PRL-3 in Cancer

Ruby Mason
University of Louisville

Regulation of Epithelial-to-Mesenchymal Transition in Triple Negative Breast Cancer by Stilbene Compounds

Kaelyn Julmeus
Florida Gulf Coast University

Ionic Current Rectification via Nanoporous Membrane and Functionalized Silica Nanoparticles for Programmable Nicotine Drug Delivery Systems

Katie Nolan
Georgia Southern University

Forum F

Panel Presentation

Indian Food and Dance

Jaskaran Dhiman, Shrey Pradeep, Rohit Reddy, Anjali Thottassery, Roshni Datta, Anusha Mukherjee
University of Alabama at Birmingham

Forum G

Oral Presentations
Environmental Research

Comparing metrics of wetland vegetation structure derived from UAS photogrammetric and LiDAR collections

Elijah Dalton
University of North Carolina Wilmington

Decomposition Rates at Bioretention Gardens in Warner Park After 12 Weeks

Uma Plambeck, Dr. DeAnna Beasley
University of Tennessee at Chattanooga

Studying Suspended Sediment Concentrations in the South Chickamauga Creek of Chattanooga, TN using Satellite Imagery, Digital Image Processing, and Numeric Modeling

Abigail Faxon
University of Tennessee at Chattanooga

GENERAL SESSION 3:00 - 3:50 PM

Forum A

Hosted Conversation

Pandemics and People: Questioning How It Works and How It Affects Us

Carley Frost, Elizabeth Barnes, Timothy Rodriguez, Dr. Martin Brock
Eastern Kentucky University

Forum B

Hosted Conversation

The End to First Generation Students by beginning to support student parents NOW!

Belinda Dapreis
Georgia College and State University

Forum C

Oral Presentations
Science 3

Short and long-term effects of synthetic microfibers from textiles on freshwater aquatic worms

Sarah Martinez
Georgia Southern University

The role of epigenetics and phenotypic plasticity in the ability of *Hydrocotyle bonariensis* to occupy two different habitats

Tripp Parsons
Georgia Southern University

Withstanding The Shock: Evaluating The Relationship Between Thermal Shock And Strength Degradation In Sand-Tempered And Fiber-Tempered Pottery

Sierra Setter
University of West Georgia

GENERAL SESSION 3:00 - 3:50 PM

Forum D

Oral Presentations
*Mathematics &
Physics*

The Clock Paradox in Special Relativity: Trying to explain (and solve) it in a simple way

Breno Mascarenhas Pontes
Morehead State University

Ulam Numbers

Aaron Reynolds
The Citadel

The Derivative of a Solution to a Third Order Parameter Dependent Boundary Value Problem on a Time Scale

William Jensen
The Citadel

Forum F

Panel Presentation

Short-Film Fest

Brandon Marquez, Lauren Nell Walker, Andres Christensen, Akhila Maruvada, Alan Gardner
University of Alabama at Birmingham

Forum G

Oral Presentations
Arts & Literature 2

Parasocial Tactics of “The Bachelor” Influencers on Instagram

Olivia Danner, Lily Plum
University of West Florida

Antihero as Popular Moral Exemplar: A Study of The Beggar’s Opera and Deadpool

Brent Robbins
Florida Gulf Coast University

“Sence You Went Away” by H. Leslie Adams

Shani Thompson
Georgia College and State University

GENERAL SESSION 4:00 - 4:50 PM

Forum A

Hosted Conversation

Undergraduate publication from Start to Finish; UReCA: The NCHC Journal of Undergraduate Research and Creative Activity

Jude Keef, Lauren Graves, Russell Helms, Seth Courtad, Jane Dodge
University of Tennessee at Chattanooga

Forum B

Oral Presentations

The Creative Imagination: Viewing Life and Death Through an Artistic Lens

MaKenna Lambert, Natalia Smith, Peter Wilson
Eastern Kentucky University

Forum C

Oral Presentations

*Environmental
Conservation*

Saving Louisiana's Last Chenier

Nautica Jones
University of Louisiana at Monroe

Environmental Racism in the United States

Rachael Bruffey
Seminole State College of Florida

Argos' Edible Campus

Cody Morton, Monica Woodruff, Emily Keiffer
University of West Florida

Forum D

Oral Presentations

*Stress Reduction
Techniques*

Effectiveness of Stress Reduction Interventions in College Students During Finals Week

Emmanuel Perez
University of Louisiana at Monroe

The Effects of Expressive Writing Therapy on the Stress Response

Rylan Sweitzer
University of North Carolina Wilmington

Effectiveness of Aromatherapy Scents in Reducing Canine Stress in a Veterinary Setting

Arianna Yelverton
University of Louisiana at Monroe

GENERAL SESSION 4:00 - 4:50 PM

Forum F

Video Projects

“Brave Space”

Lillie Ben Harris
University of Alabama At Birmingham

“Unyielding Ground in the Bluest Eye”

Madison Cagle
Jacksonville State University

“Identity as Spiritual and Religious Experience”

Jeremy Copley
Morehead State University

“A Musical Portrait of Hemingway”

Harman Kaler
Catawba College

Forum G

Oral Presentations
History & Politics

Showing the Flag: The Evolution and Politics of Naval Gun Cruisers from 1880 to 1950

Andrew Jason Kisamore
Catawba College

St. George Through the Centuries

Catherine McKee
Lander University

Controversial Intelligence Gathering: Deciphering the Actions of the U.S. Intelligence Community to the Public

Rachel Lehkamp
Eastern Kentucky University

KEYNOTE

5:00 PM - 6:00 PM



ASHLEY M. JONES

Ashley M. Jones is the Poet Laureate of the State of Alabama (2022-2026). She holds an MFA in Poetry from Florida International University, and she is the author of *Magic City Gospel* (Hub City Press 2017), *dark / / thing* (Pleiades Press 2019), and *REPARATIONS NOW!* (Hub City Press 2021). Her poetry has earned several awards, including the Rona Jaffe Foundation Writers Award, the Silver Medal in the Independent Publishers Book Awards, the Lena-Miles Wever Todd Prize for Poetry, a Literature Fellowship from the Alabama State Council on the Arts, the Lucille Clifton Poetry Prize, and the Lucille Clifton Legacy Award. She was a finalist for the Ruth Lily Dorothy Sargent Rosenberg Fellowship in 2020, and her collection, *REPARATIONS NOW!* was on the longlist for the 2022 PEN/Voelcker Award for Poetry. Her poems and essays appear in or are forthcoming at CNN, *POETRY*, *The Oxford American*, *Origins Journal*, *The Quarry by Split This Rock*, *Obsidian*, and many others. She co-directs PEN Birmingham, and she is the founding director of the Magic City Poetry Festival. She teaches in the Creative Writing Department of the Alabama School of Fine Arts, and she is part of the Core Faculty of the Converse University Low Residency MFA Program. She recently served as a guest editor for *Poetry Magazine*.

A book signing will follow.

<https://ashleymjonespoetry.com/>

STUDENT SOCIAL

8:00 - 9:00 PM

SRHC ANNUAL
CONFERENCE 2022

**Share your
perspective**



**SOCIAL
JUSTICE
DISCUSSION**

April 1 2021

8PM-9PM

**SHERATON BIRMINGHAM HOTEL
BIRMINGHAM BALLROOM III, IV, VII, VIII, XI, XII**

Saturday, April 2

7:00 a.m. - 8:30 a.m.

Breakfast

Birmingham Ballrooms 3, 4, 7, 8, 11, 12

8:30 a.m. - 10:00 a.m.

Poster Session II

Birmingham Ballrooms 1, 5, 9

9:00 a.m. - 11:50 a.m.

General Sessions

Forums A, B, C, D, F, G

12:00 p.m. - 1:00 p.m.

SRHC Executive Committee Meeting

Poster Session II

8:30 a.m. - 10:00 a.m.

At the Center of Nonviolence Stands the Principle of Love

Brittany Anderson & Keyonna McCormick
Miles College

Honors Thesis: Identity: A 2021 Student Exhibition

Anna Grace Askelson
University of Montevallo

Design Process & Development of "You Matter" Campaign

Savannah Bates
Lander University

Selective Trust in Women in STEM by Boys and the Influence of Educational Programs on Television

Lauren Berck
Bellarmine University

Young Adult Anxiety Through a Lens

Danielle Billups
Gardner Webb University

Looks Like Me: How Representation in the Classroom Matters!

Skylar Brown
Lander University Honors College

An Examination of Well-Being and Social Media Use Across the Lifespan

Emma Campsey None
High Point University

Eating Disorders During the Coronavirus Pandemic: Why Recovery Became Harder and Relapse Became Easier

Clio Chazan-Gabbard
University of North Florida

Exploring Causative Factors Responsible for High Turnover Rates of Nurses

Chandler Clark Chrystal Lewis
University of South Alabama

Media and its Correlation to Cynicism

Madison Cothorn
University of Tennessee at Chattanooga

Poster Session II

8:30 a.m. - 10:00 a.m.

Gratian's Decretum: The Living Document of the 12th Century

Koen Dunlap
University of West Florida

College Student Mental Health: The Impact of COVID-19 and Hurricanes

Samantha Ellis
Southeastern Louisiana University

Changes in Perceptions of Sports Gambling

Ken Fridy
University of West Florida

Putting the "T" In TRIP Lab, The Impact of Social Media on Research

Rachael George S. Marcum, M. Adamson
University of Alabama at Birmingham

Sex differences in the relationship between neighborhood safety and anxiety in adolescence

Benjamin Grammer
University of Alabama at Birmingham

Does Anxiety Moderate the Relationship between ADHD Inattention Symptoms and Cognitive Flow States?

Anna Hall
Georgia Southern University

Techno-racism

Carlisha Harris
Miles College

When Love Hurts: How romance depictions in film contribute to relationship abuse

Alexandria Hatten
University of North Georgia

Personal Narratives of Transnational Adoption: Navigating Family, Belonging, and Transcultural Connection

Felicia Helmlinger
University of North Carolina at Wilmington

Immigration at the U.S.-Mexico Border: Past, Present, and Future Policies

James Ives
The Citadel

Poster Session II

8:30 a.m. - 10:00 a.m.

The Strategic Value of the Attack on Pearl Harbor

Ethan Jennings
The Citadel

Regulating Social Media in an Age of Disinformation: An Analysis of the Misinformation Crisis According to Public Choice Economic Theory

Aubrey Kirchhoff
Bellarmine University

Put Yourself in Someone Else's Wings: The Active Practice of Empathy

Nina MacKinnon
Catawba College

The Relationship between Napping and Social Interaction in College Students

Abigail Meaney None
High Point University

Beneath the Masks: The Impact of COVID-19 Restrictions on Children's Interpersonal Communication

Lexi Miller
University of West Florida

An Economic Impact Analysis for an Aviation Program at The University of West Florida

Mariana Negreiros Mariano
University of West Florida

Shy or Anxious? Examining the Efficacy of School-Based Interventions for Childhood Social Anxiety

Samantha Neuhaus
Eastern Kentucky University

Barriers to higher education for Florida citizens with a criminal record

Kelly O'Hanlon
Florida SouthWestern State College

Justice Denied: Racism in Sentencing in Charlotte County, Florida

Jade Oquendo-Eisenhour
Florida Southwestern State College

"De Natura hominis"

Erin Otts
University of Alabama at Birmingham

Poster Session II

8:30 a.m. - 10:00 a.m.

The Aromatic Colorful Evergreen (ACE) Garden

Anushka Patel
University of Alabama at Birmingham

Colonware and the Archaeology of Urban Slavery

Kaitlynn Perry
Georgia Southern University

The Importance of the First Thousand Days of Life in Preventing Childhood Obesity

Meghan Philcox
Lander University

Clouds of Misunderstanding: Vaping Popularity

Zayna Qaissi
University of Louisville

Determinants of Ticket-Type Demand for a Multi-Genre Comic Convention

Ester Rizzetto Felicia Morgan, Richard Hawkins
University of West Florida

The Political Economy of Border Wall Construction

Molly Rovinski
Bellarmine University

A GIS-Based Analysis of Human Trafficking in the Lowcountry

Ashley Ruiz
Citadel

The Effects of Meditation on Preschool Children

Laurent Sanchez Rodriguez
Seminole State College of Florida

An Econometric Analysis of Collegiate Player Performance to Model the Determinants for Contributions to Team Success

Evan Seely
Bellarmine University

A Transformation of Vision: Religious Context and Female Representation in Bollywood Film Adaptations

Aditya Singh
Bellarmine University

Poster Session II

8:30 a.m. - 10:00 a.m.

Adult ADHD online communities: Impact on understanding one's identity and diagnosis

Correna Tate
Bellarmine University

Prescriptivism, Privilege, and Power: How Standard Language Education Empowers and Devalues Learners

Kaitlyn VanWay
Eastern Kentucky University

Bloody Thursday: The Chiquola Mill Massacre

Angelina Vita
Lander University

Tour of Italy: The Excursions of Italian cities through History, Time, and Maps

Kathryn Webb
Catawba College

Spanish-Speaker Self-Efficacy: Associations of Provider Cultural Competence and Patient Success

Thomas Wilson
University of North Carolina Wilmington

A Call to Action: Juvenile Incarceration vs. Restorative Justice

Casey Wink
Bellarmine University

GENERAL SESSION 9:00 - 9:50 AM

Forum A

Hosted Conversation

Coloring the Medical Standard: An Analysis of the Model that Influences Medicine in America

Alan Gardner, Alecia Argrett, Donte Johnson
University of Alabama at Birmingham

Forum B

Oral Presentations

Childhood

Development

The impact of love within music

Emma Clugsten
Appalachian State University

Raffi and Responsivity: The Impact Of Children's Music and Parental Engagement

Elizabeth Jones
Eastern Kentucky University

Adults' Perceptions of Children: Expectations of Children with Disabilities and History of Sexual Abuse

Asha Harp
Georgia Southern University

Forum C

Oral Presentations

Gender & Identity

Freakish Identity

Brianna Bailey
Jacksonville State University

Pride From Within: A Look Into the Impact of Policies and Politics, Societal Perspectives, and Cultural Stigma on the Mental Health of Latinx LGBTQ+ Individuals

Sarah Ali
University of Alabama at Birmingham

The Highest and Hardest Glass Ceiling: The Impact of the Double Bind on Female American Presidential Candidates

Olivia Atkinson
Bellarmine University

GENERAL SESSION 9:00 - 9:50 AM

Forum D

Oral Presentations
Medical Science

Evolutionary Conservation of Coronary Artery Disease Associated Variants of Uncertain Significance from Humans to *C. elegans*

Lauren McCarver
Jacksonville State University

Assessing the Impact of Progeria-Associated Variants of Uncertain Significance through *C. elegans* Exploration

Madison Brooks
Jacksonville State University

Investigating the Effect of Bacteria in the Growth of Breast Cancer Cell Lines

Charlene Mansour
University of Alabama at Birmingham

Forum F

Panel Presentation

US Foreign Policy Decisions and the Rebalancing of Global Power

Mason Hand, Madison Henning, Andrew Palmer, Henry Allen
The Citadel

Forum G

Oral Presentations
Environmental Science

The Magic of Mushrooms: How Psychedelics could increase our well-being

Kurt Nicolai Sarnier
University of Alabama at Birmingham

The Environmental Equity in the Magic City

Everett Ferguson
Miles College

In the Face of Climate Change, Does Human Trampling Affect Resilience and Alter Ecosystem Services?

Alexandra Findlay, Dr. Lissa Leege
Georgia Southern University

GENERAL SESSION 10:00 - 10:50 AM

Forum A

Oral Presentations
Inequality in Education

Inequalities in Gifted Education Selection as a Source of Systemic Racism in the United States

Aidan Keaveny
Appalachian State University

Addressing the Achievement Gap in Central Alabama School Districts

Rebekah Cahill
University of Tennessee at Chattanooga

TC Talks

Oldeander Reagan-Artemis
University of Tennessee at Chattanooga

Forum B

Panel Presentation

The Vulnerability of Abortion Rights

Anthony Venezia, Liberty Wigen, Roshan Dahale
University of Alabama at Birmingham

Forum C

Oral Presentations
Innovations in Literature

One-Hitters: Formal Poetry and Innovation

Luis Heard
Bellarmine University

Constructing History: the Fantasy Echo and How We Win

Seth Courtad
University of Tennessee at Chattanooga

A Socio-Economic Read of Psychological Trauma in *The Color Purple* and *The Bluest Eye*

Andrea Doll
Bellarmine University

GENERAL SESSION 10:00 - 10:50 AM

Forum D

Oral Presentations
*Avenues for
Healthcare*

COVID-19 Impact on Executive Functions

Shannon Ackerman
Eastern Kentucky University

Assessing Trauma-Informed Care in Physical Therapy

Aubry Ikner
University of South Alabama

Forum F

Musical Performances

"In the City at Night"

Lucas Reed
Eastern Kentucky University

"Song"

Hayley King
Morehead State University

Recording and Production Through the Eyes and Ears of a Student

Arrany Spence
University of Alabama at Birmingham

Forum G

Oral Presentations
Therapeutic Solutions

Mindfulness Meditation as a Potential Mechanism to Decrease Negative Affective Response to High Intensity Exercise

Macy Berghoff
Bellarmine University

The Impacts of Occupational Therapy on Incarcerated Americans

Cassidy Cain
Eastern Kentucky University

The Pawsibilities are Endless: The Emerging Benefits of Animal-Assisted Interventions for Mental Health Treatment

Simona Shirley
University of Alabama at Birmingham

GENERAL SESSION 11:00 - 11:50 AM

Forum A

Panel Presentation

The True Cost of Medical School Applications and the Effect on Applicant Diversity

Avery Thomas, John Ellis Kukykendall, Jeri Grundhoefer, Samantha Walker
University of Alabama at Birmingham

Forum B

Oral Presentations
Emotions Through History

Adultery and Fidelity in the Lais of Marie de France

Emma Beeler
Mississippi University for Women

Keeping a Stiff Upper Lip: British Morale and Daily Life in World War II

Veda Joshi
University of Alabama at Birmingham

Ever-present Food and Eating in Plath's *The Bell Jar* and Select Poems

Jane Dodge
University of Tennessee at Chattanooga

Forum C

Oral Presentations
Political Viewpoints

Language of Persuasion and Cult Leaders: Keith Raniere

Navah Chestnut
University of Tennessee at Chattanooga

Christian Fundamentalism and U.S. Nationalism

Navah Chestnut, Brianna Morelli
University of Tennessee at Chattanooga

When the Fire Nation Attacked: A View of the Colonialism and Imperialism Within *Avatar: The Last Airbender*

Jared Christian
Eastern Kentucky University

GENERAL SESSION 11:00 - 11:50 AM

Forum D

Creative Performances

Merry Go Round of Life

Anusha Mukherjee & Roshni Datta
University of Alabama at Birmingham

Stay at Home Ordinance

AC Coy
University of North Carolina at Greensboro

Forum F

*Oral Presentations
Science and
Technology*

Protochime: Testing a New Method for the Gravitational Direct Detection of Dark Matter

Aidan Keaveney
Appalachian State University

Partial Automation of Data Analysis in a Z Prime Boson Search

Ethan Colbert
Bellarmine University

Health Literacy of d/Deaf and Hard of Hearing Patients in the South

Kaleb Kittrell
University of South Alabama

Forum G

Panel Presentation

Russia's War on Ukraine: A Roundtable Discussion & Lessons for Honors

Joshua Stockley, University of Louisiana at Monroe
Tracy Harbin, Seminole State College of Florida

